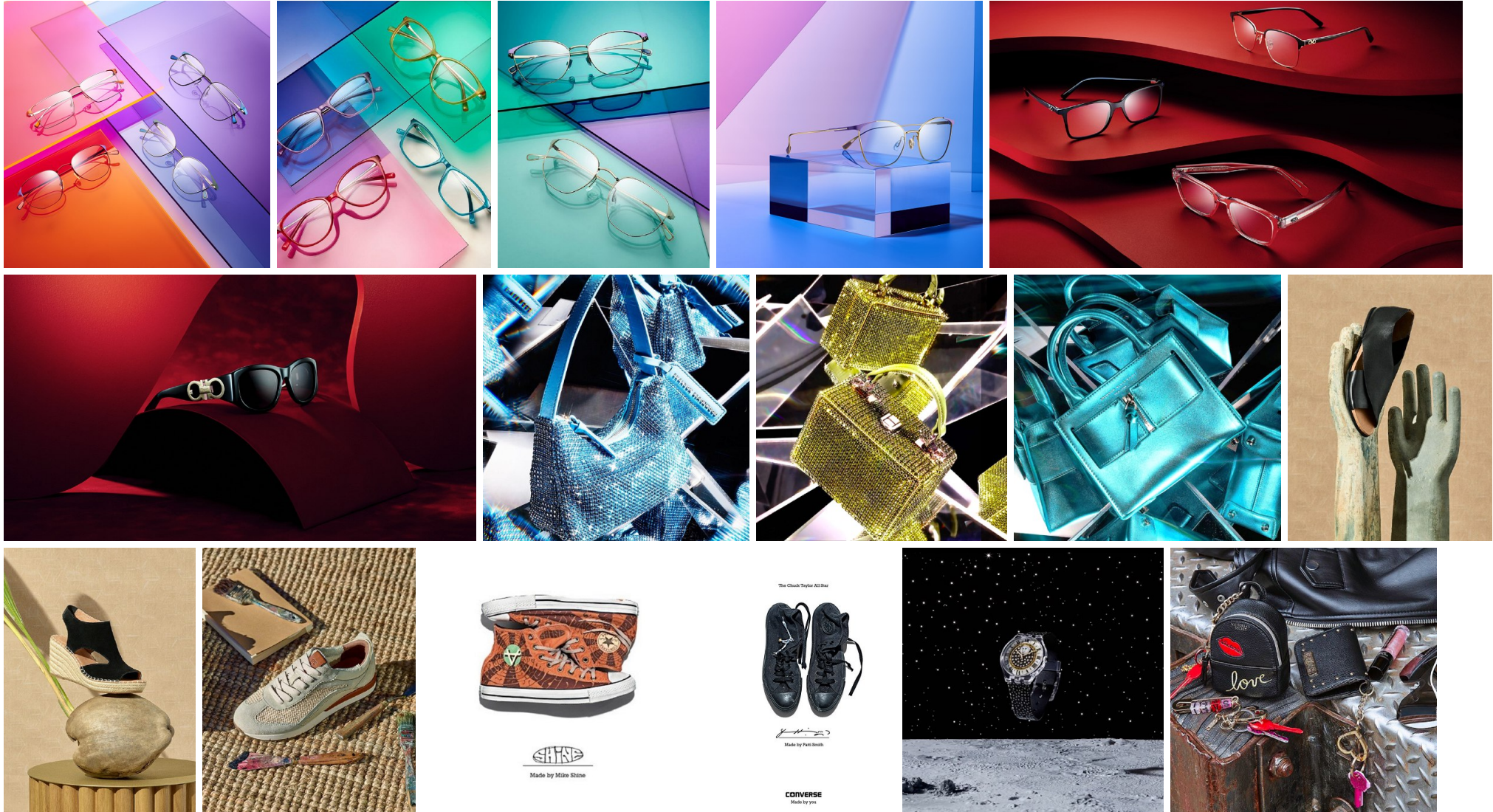


SHANE KLEIN / ACCESSORIES







**ANCHOR MANAGEMENT**  
FOR THE FINEST OF US, THESE CLOTHES ARE NOT JUST CLOTHES. THEY'RE ANCHORS.

- DIVERSITY HAS A TASTE FOR THE SEA. For us, it's a passion for the sea that has inspired us to create a collection of nautical-inspired pieces that are both timeless and modern. And with our signature Versace Medusa logo, they're the perfect way to anchor your style.

VERSACE

VERSACE

**VERSACE**  
FOR THE FINEST OF US, THESE CLOTHES ARE NOT JUST CLOTHES. THEY'RE ANCHORS.

VERSACE