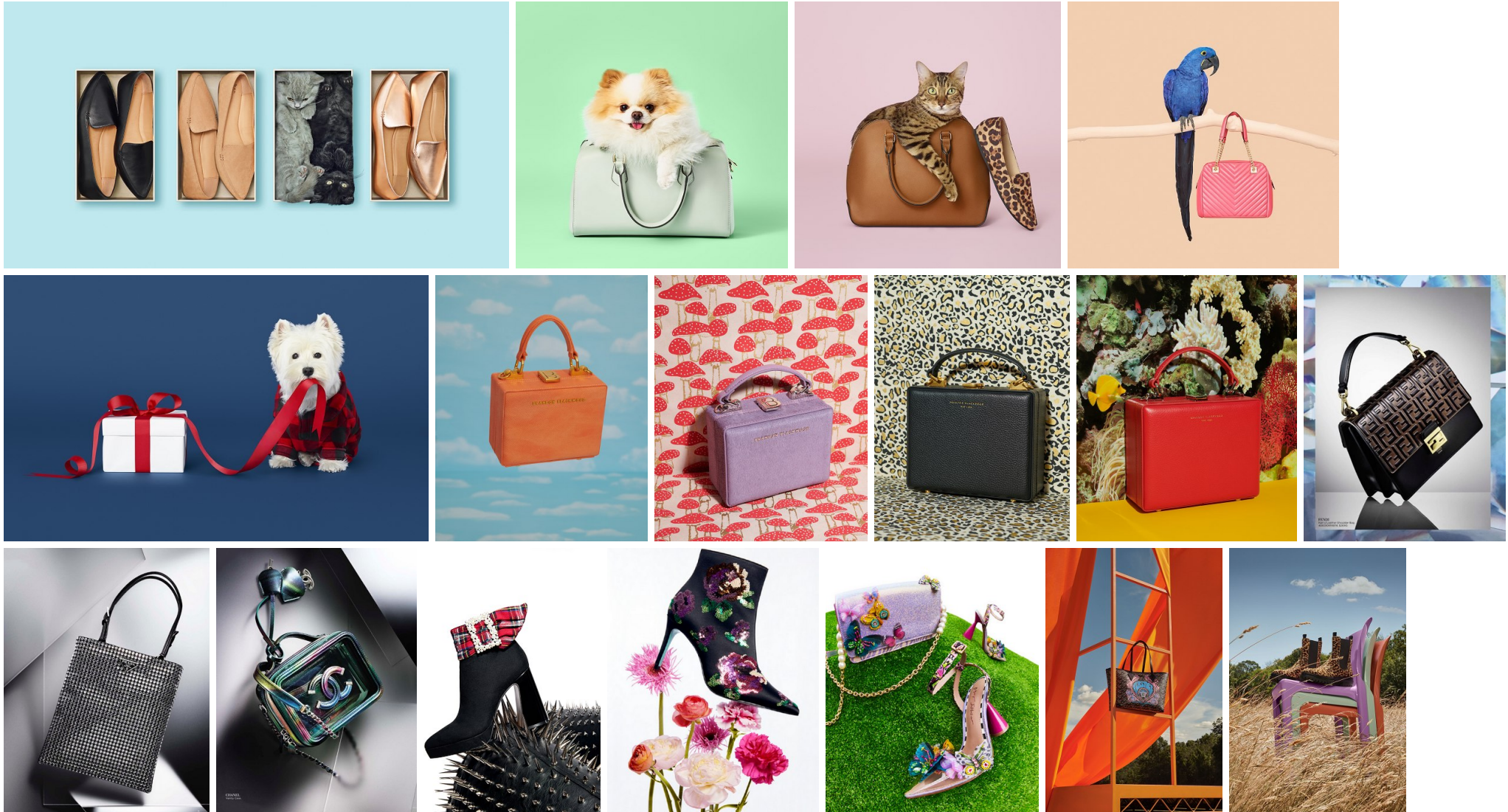
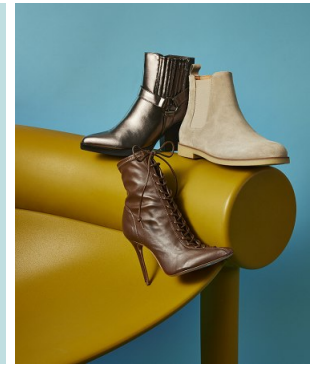


SHARON RYAN / ACCESSORIES / ADVERTISING





DOWN TO EARTH
DESIGNER FINDS ARE GROUNDED BY NATURALISTIC TOUCHES AND BOTANICAL SHADES.

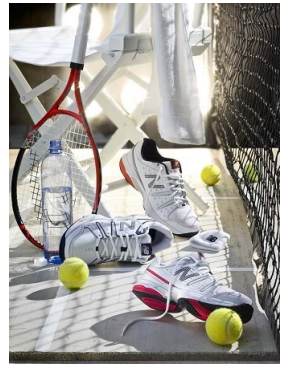
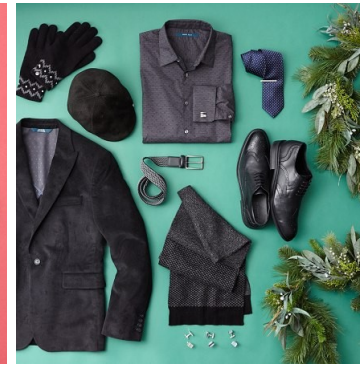
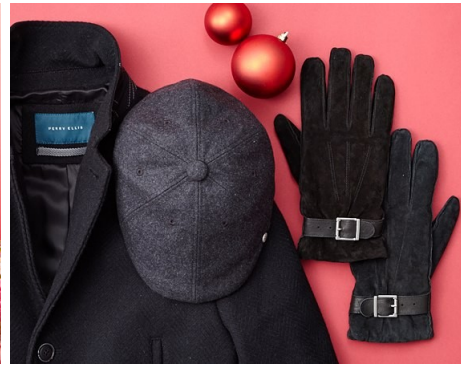
CÉLINE
Weave lightened-up carnyvals into your spring wardrobe **over 25% off.**

ROBERT CLERGERIE
The French footwear legend pairs form and function perfectly at **up to 65% off.**



PAUL SMITH & MORE
Turn an eye toward new styles **over 80% off.**





INTRODUCING
THE GIFTLUENCERS

This holiday season, we've enlisted the help of a variety of cultural influencers who aren't easily impressed, but who know how to make an impression. Check out their top gift picks for him and her.

KENNETH COLE